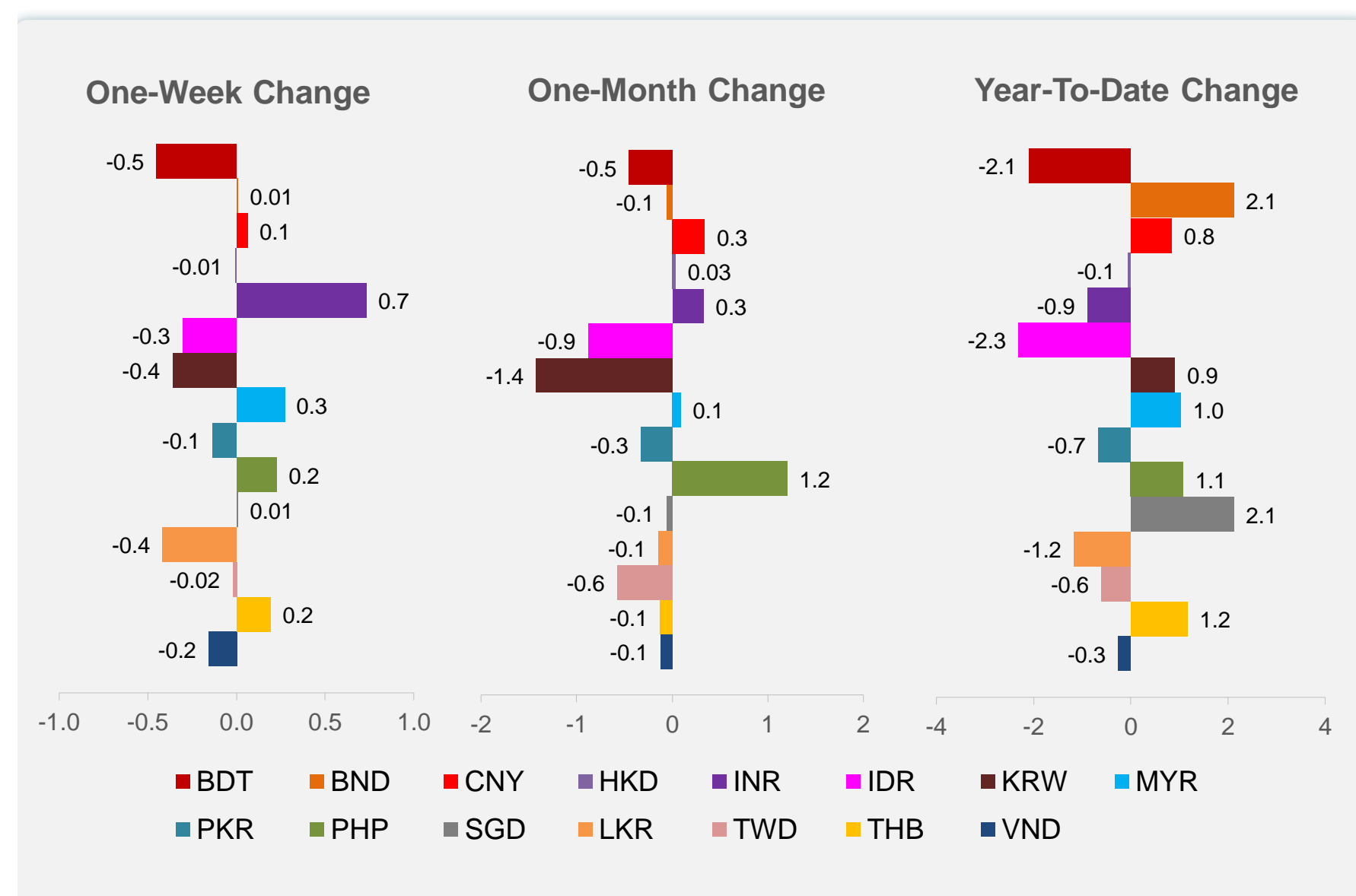
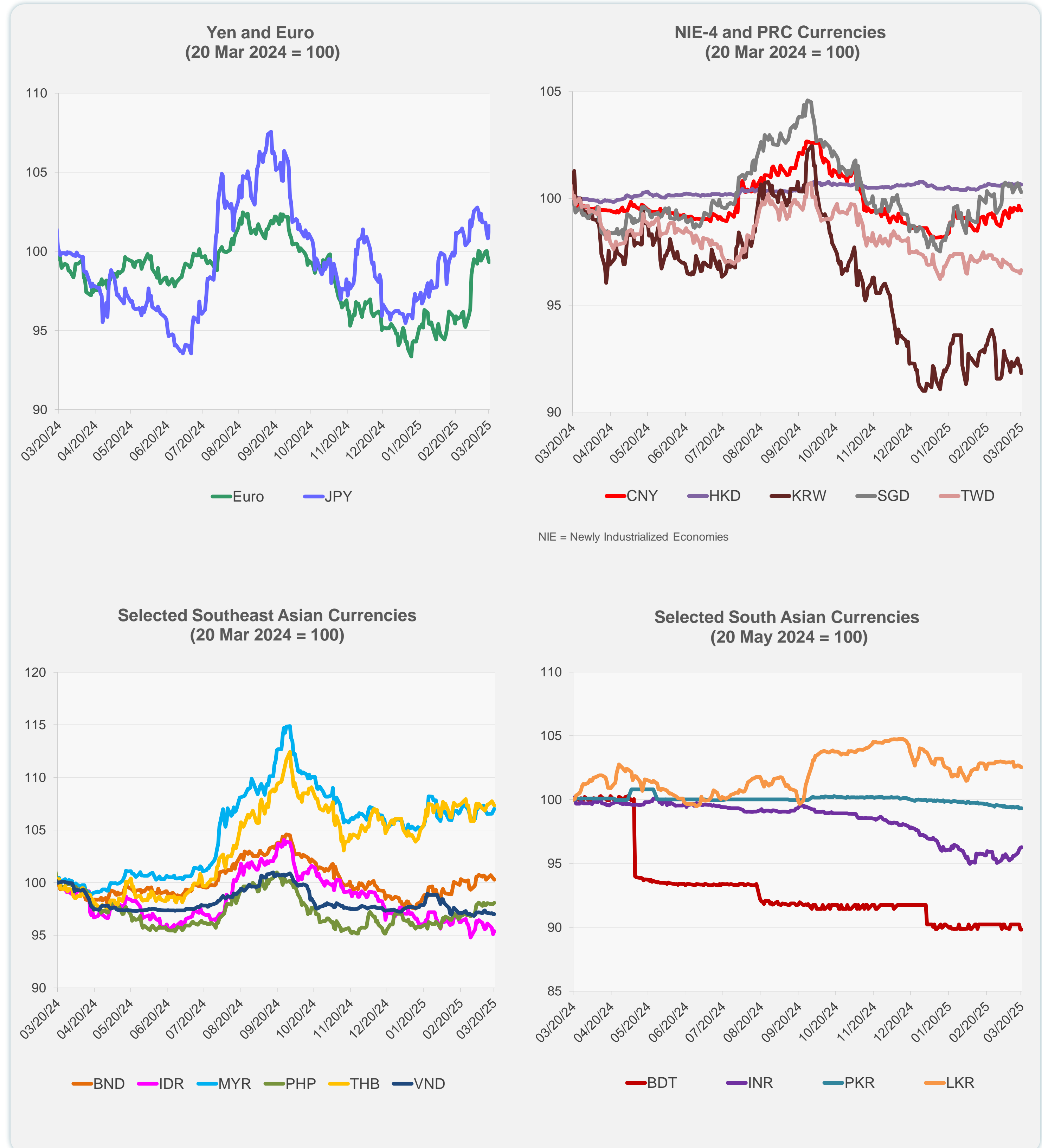
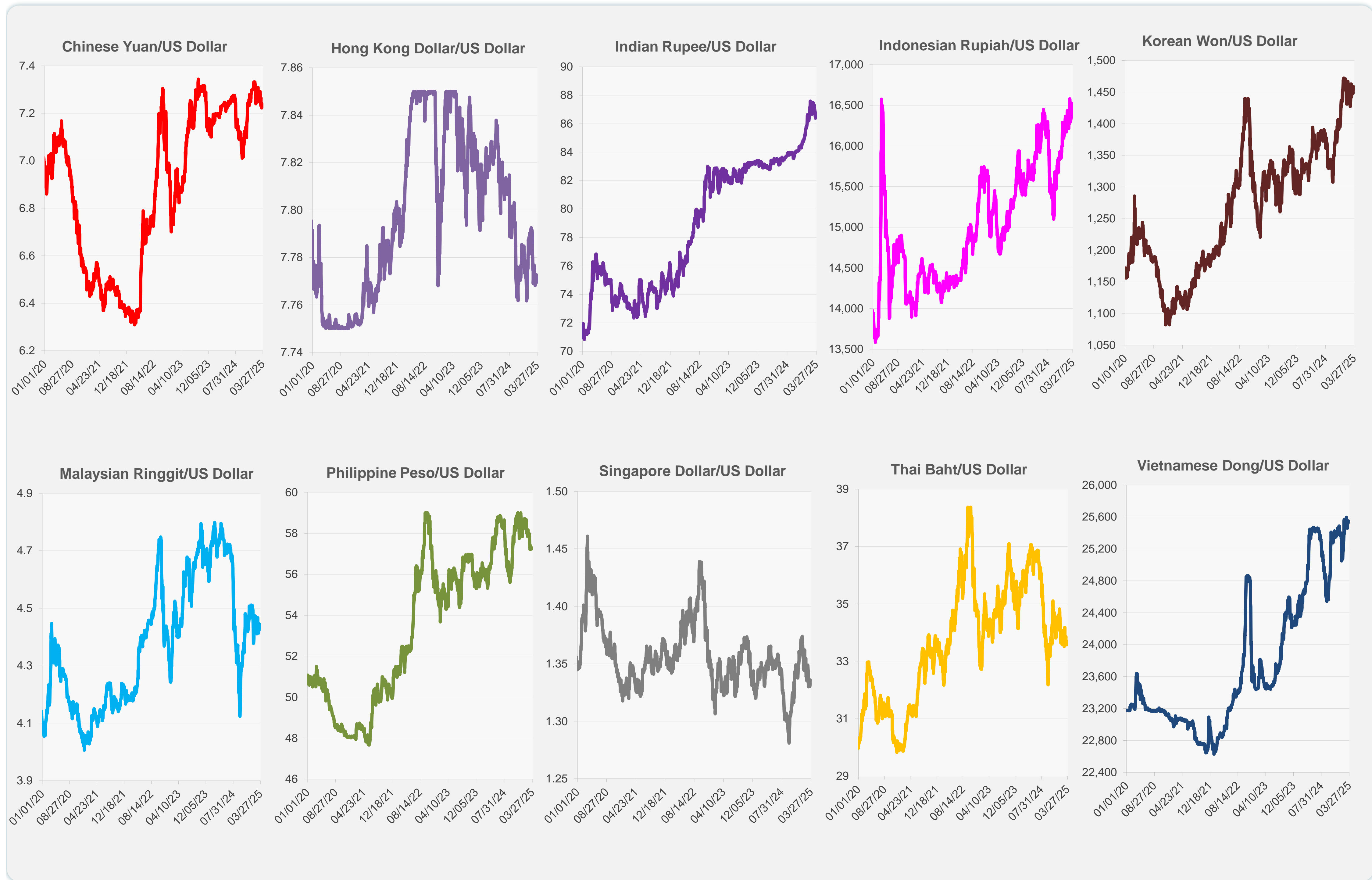


	Latest Closing	% change from Previous Day	% change from 01-Jan-25
Euro	0.92	-0.27	4.75
Japanese yen (JPY)	148.87	0.79	5.57
Bangladeshi taka (BDT)	122.05	0.00	-2.09
Brunei dollar (BND)	1.34	-0.13	2.12
Chinese yuan (CNY)	7.24	-0.03	0.84
Hong Kong dollar (HKD)	7.77	-0.03	-0.06
Indian rupee (INR)	86.38	0.07	-0.89
Indonesian rupiah (IDR)	16,475.00	0.30	-2.31
Korean won (KRW)	1,458.90	-0.40	0.91
Malaysian ringgit (MYR)	4.43	0.23	1.03
Pakistan rupee (PKR)	280.25	0.00	-0.67
Philippine peso (PHP)	57.23	0.11	1.07
Singapore dollar (SGD)	1.34	-0.13	2.12
Sri Lanka rupee (LKR)	296.45	-0.02	-1.17
Taipei,China NT dollar (TWD)	32.98	0.16	-0.60
Thai baht (THB)	33.70	-0.19	1.16
Vietnamese dong (VND)	25,550.00	-0.02	-0.25



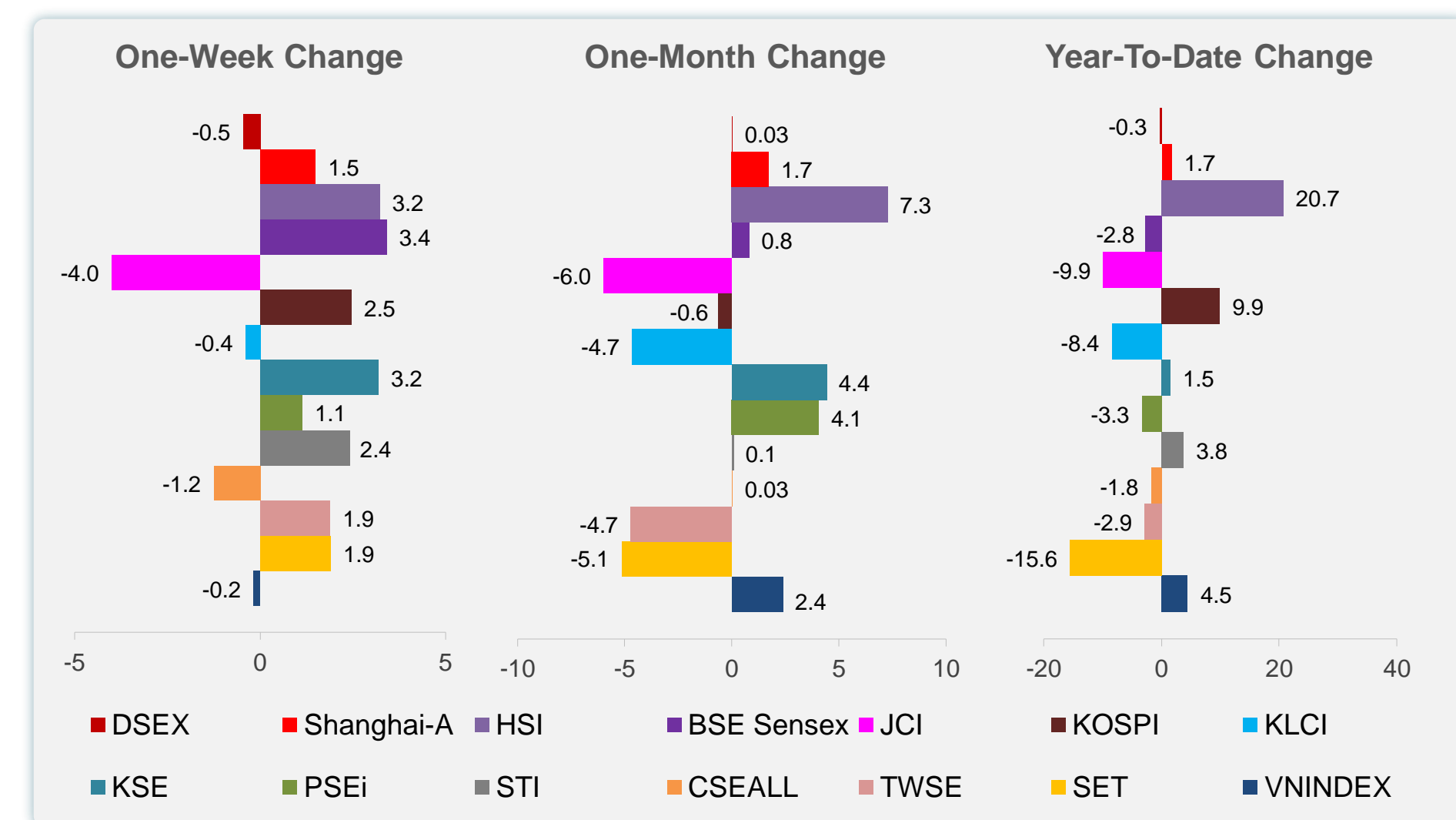
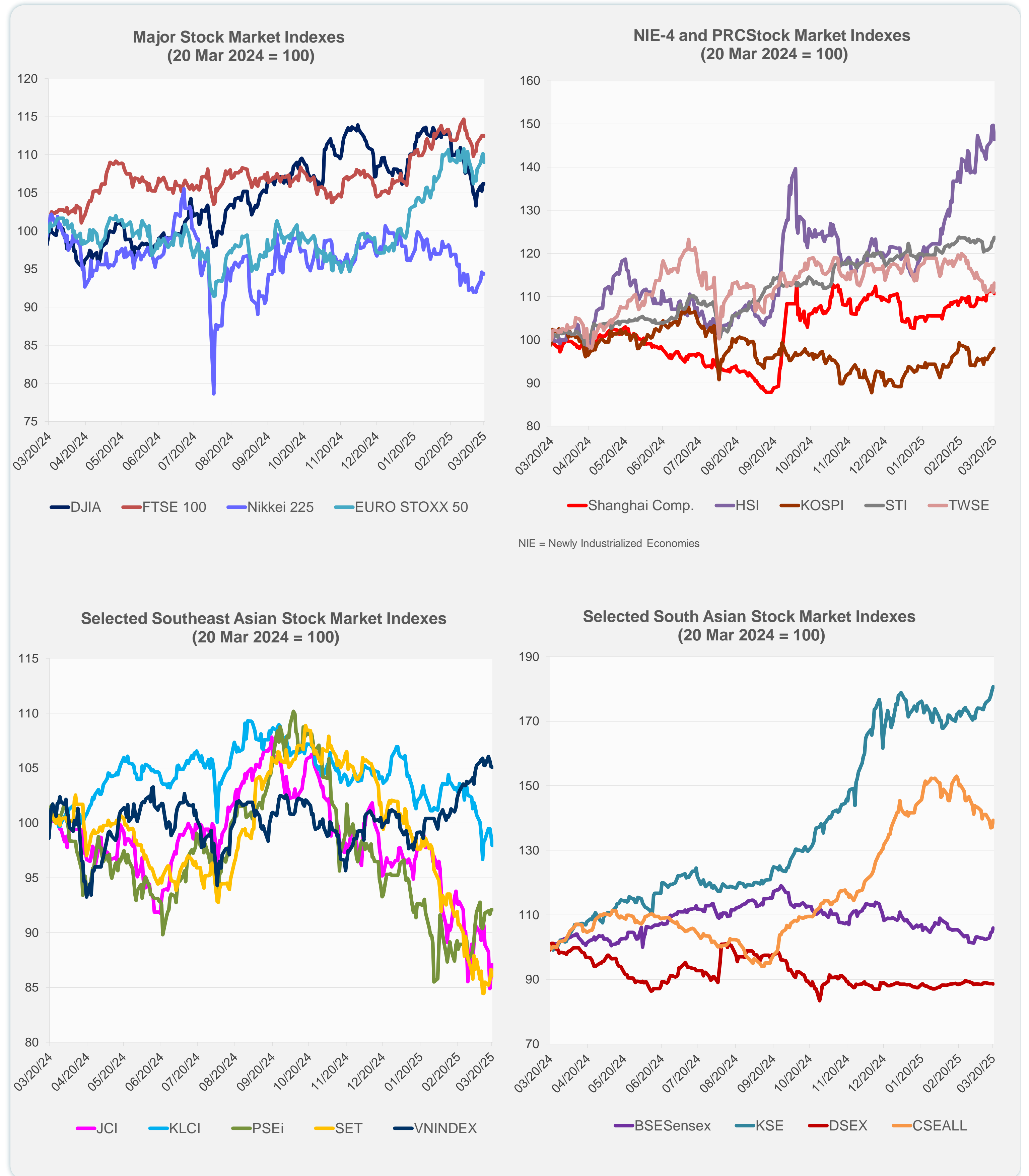
Note: Negative/Decreasing values indicate depreciation of local currency, and positive/increasing values indicate appreciation.
Source: ADB calculations using data from Haver Analytics.



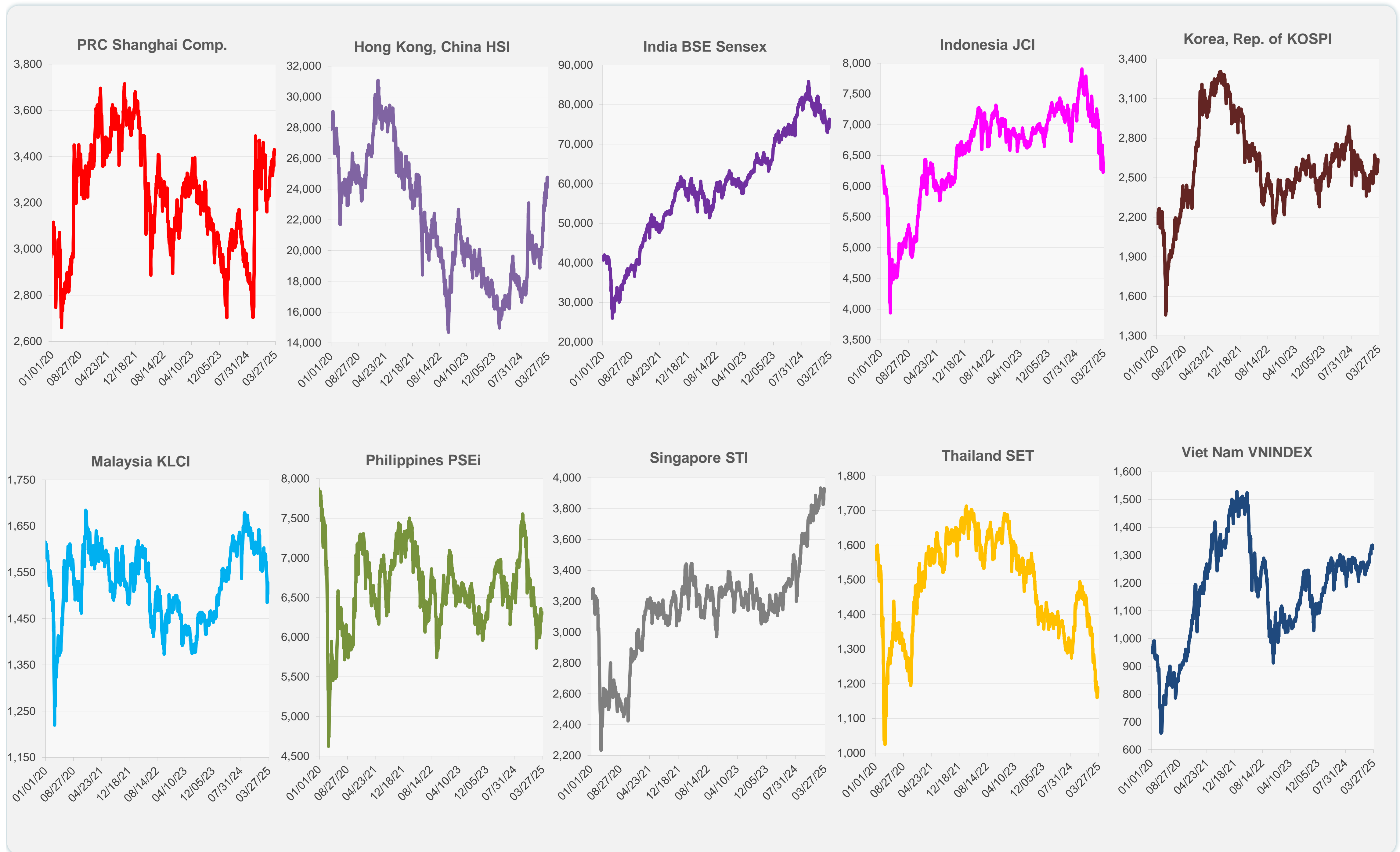
Source: Haver Analytics.

Daily Market Watch
STOCK INDEXES

	Latest Closing	% change from Previous Day	% change from 01-Jan-25
US Dow Jones Ind Avg	41,953.32	-0.03	-1.39
US NASDAQ	17,691.63	-0.33	-8.38
US S&P 500	5,662.89	-0.22	-3.72
UK FTSE 100	8,701.99	-0.05	6.47
EURO STOXX 50	5,450.93	-1.02	11.33
Japan NIKKEI 225	37,751.88	0.00	-5.37
Bangladesh DSEX	5,201.70	-0.11	-0.32
PRC Shanghai Comp.	3,408.95	-0.51	1.71
Hong Kong, China HSI	24,219.95	-2.23	20.74
India BSE Sensex	76,348.06	1.19	-2.75
Indonesia JCI	6,381.67	1.11	-9.86
Korea, Rep. of KOSPI	2,637.10	0.32	9.90
Malaysia KLCI	1,504.16	-0.89	-8.41
Pakistan KSE 100	118,769.77	0.67	1.51
Philippines PSEi	6,313.12	0.00	-3.30
Singapore STI	3,930.49	0.57	3.77
Sri Lanka CSEALL	15,662.93	1.67	-1.77
Taipei, China TWSE	22,377.26	1.90	-2.86
Thailand SET	1,181.71	-0.67	-15.60
Viet Nam VNINDEX	1,323.93	-0.05	4.51



Sources: ADB calculations using data from CEIC Data Company and Haver Analytics.



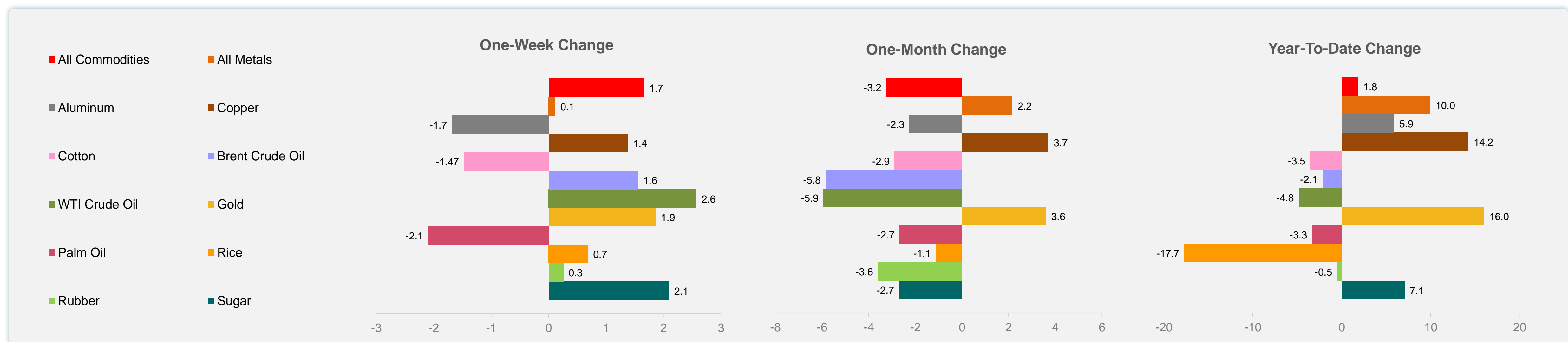
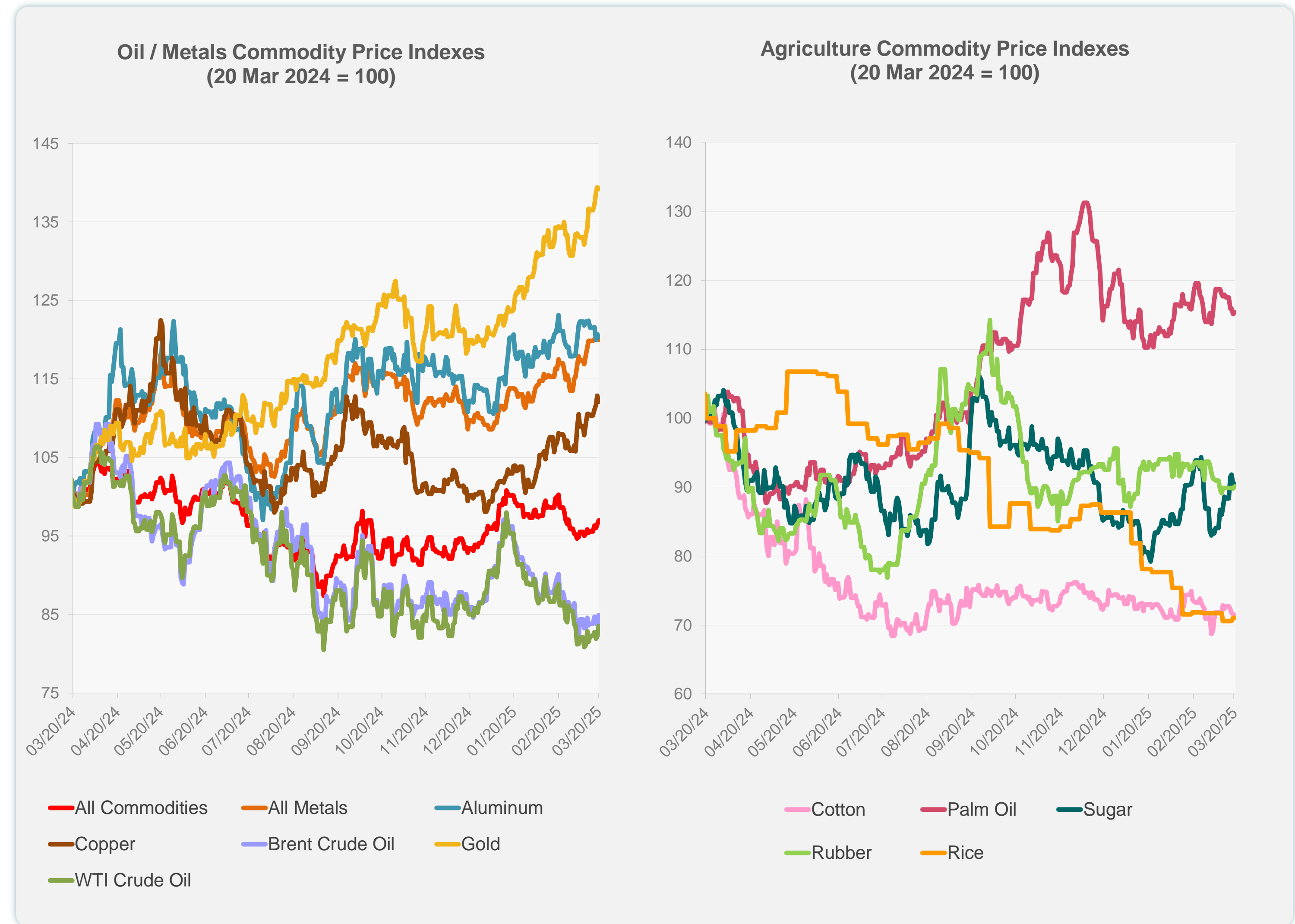
Sources: CEIC Data Company and Haver Analytics.

Daily Market Watch
COMMODITY PRICES

	Unit	Latest Closing	% change from Previous Day	% change from 01-Jan-25
S&P All Commodities	US\$	559.77	0.51	1.84
S&P All Metals	US\$	337.98	-0.35	9.96
Aluminum	US\$/metric ton	2,675.80	-0.33	5.90
Copper	US\$/metric ton	9,885.36	-0.67	14.25
Cotton	US cents/lb	63.58	-0.42	-3.52
Brent Crude Oil	US\$/barrel	72.52	1.42	-2.15
WTI Crude Oil	US\$/barrel	68.26	1.64	-4.82
Gold	US\$/troy oz	3,044.90	-0.09	16.02
Palm Oil	US\$/metric tonne	1,063.54	0.24	-3.33
Rice ¹	US\$/metric ton	442.00	0.00	-17.69
Rubber ²	US\$/kg	235.60	0.34	-0.51
Sugar	US cents/lb	19.49	0.00	7.09

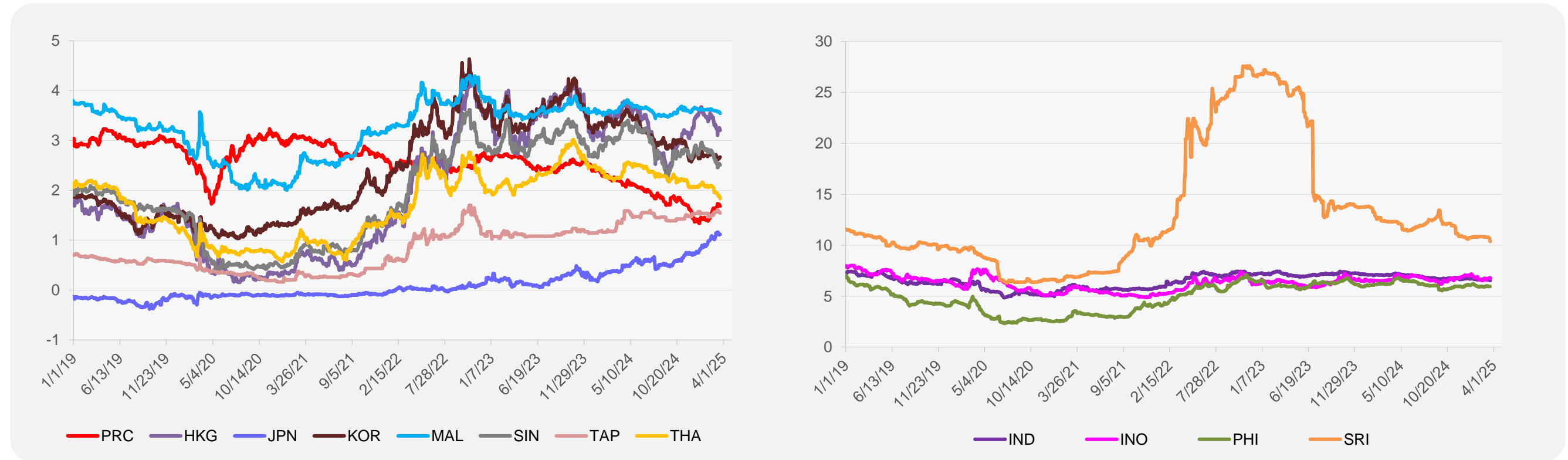
¹ Latest closing price from 19 March 2025.

² Singapore Exchange, Ribbed Smoked Sheet Rubber.

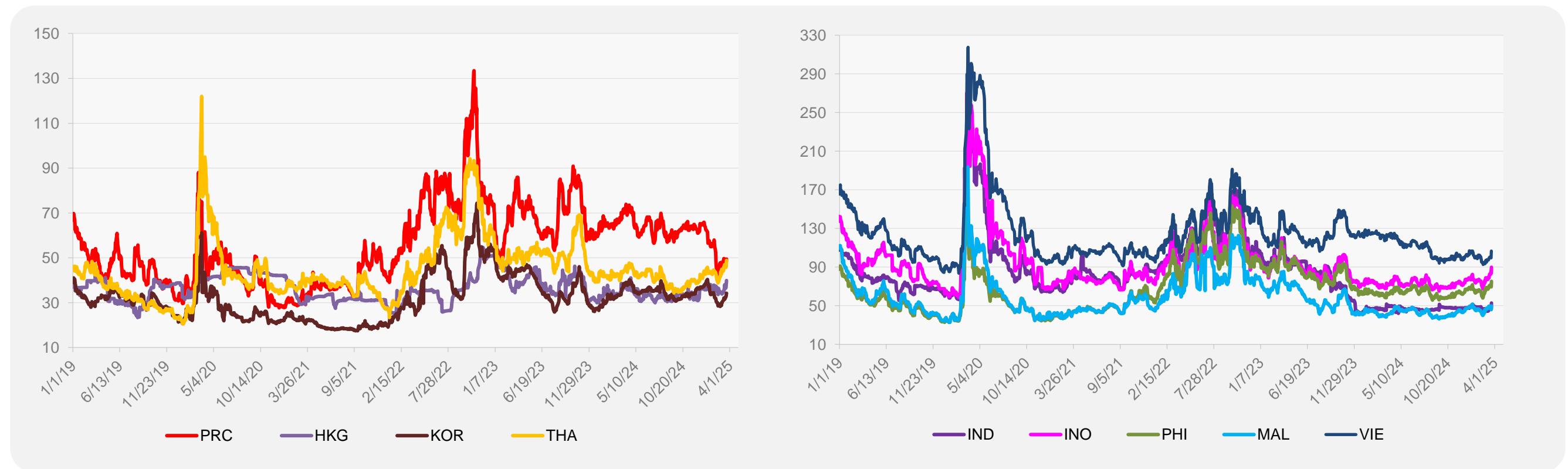


Source: ADB calculations using data from Bloomberg.

5-YEAR LOCAL CURRENCY GOVERNMENT BOND YIELDS (%)



5-YEAR CREDIT DEFAULT SWAP¹



¹ In USD and based on sovereign bonds.
Source: ADB calculations using data from Bloomberg.